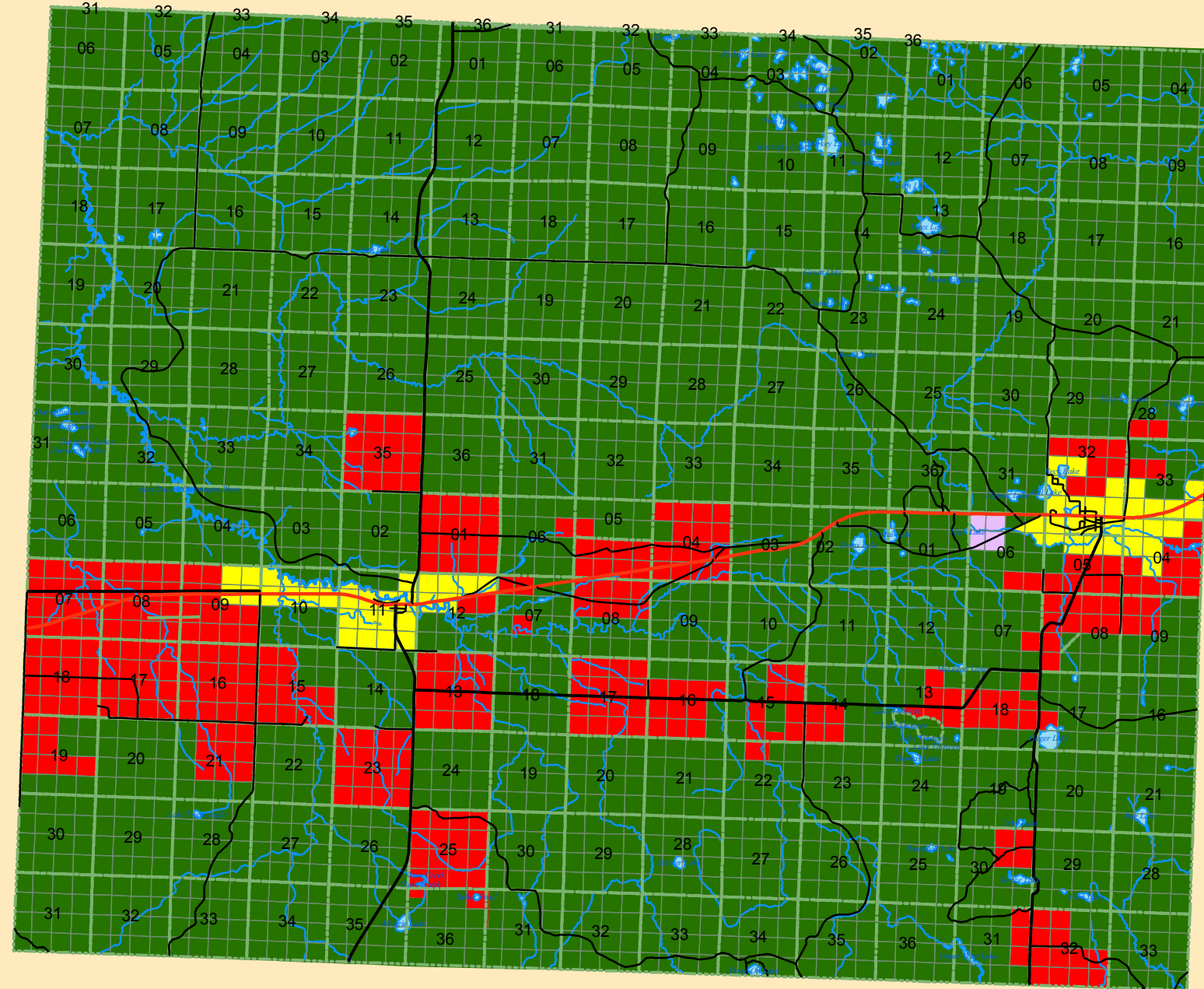


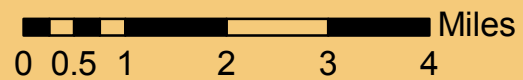
DUNCAN TOWNSHIP: Future Land Use as per Adopted Zoning Map



Future Land Use as per Adopted Zoning Map

- Agricultural Residential
- Commercial Residential
- Forest and Recreational
- Industrial and Heavy Commercial

1:120,000



Data Obtained from GEM Center for Science and Environmental outreach.
 MTU Source:
 Map Produced by Russell Slatton for the Houghton County Planning Commission
 Revised by: MAB - UP Engineers & Architects, Inc.
 Revision Date: 06/26/2006 & 11/28/2011
 WUPPDR: 05/08/2012

Legend

- | | |
|--------------------|----------------------|
| Sections | County Primary Roads |
| Q_Quarter Sections | Highways |
| Lakes | All Other Roads |
| | Streams |
| | Utilities |

