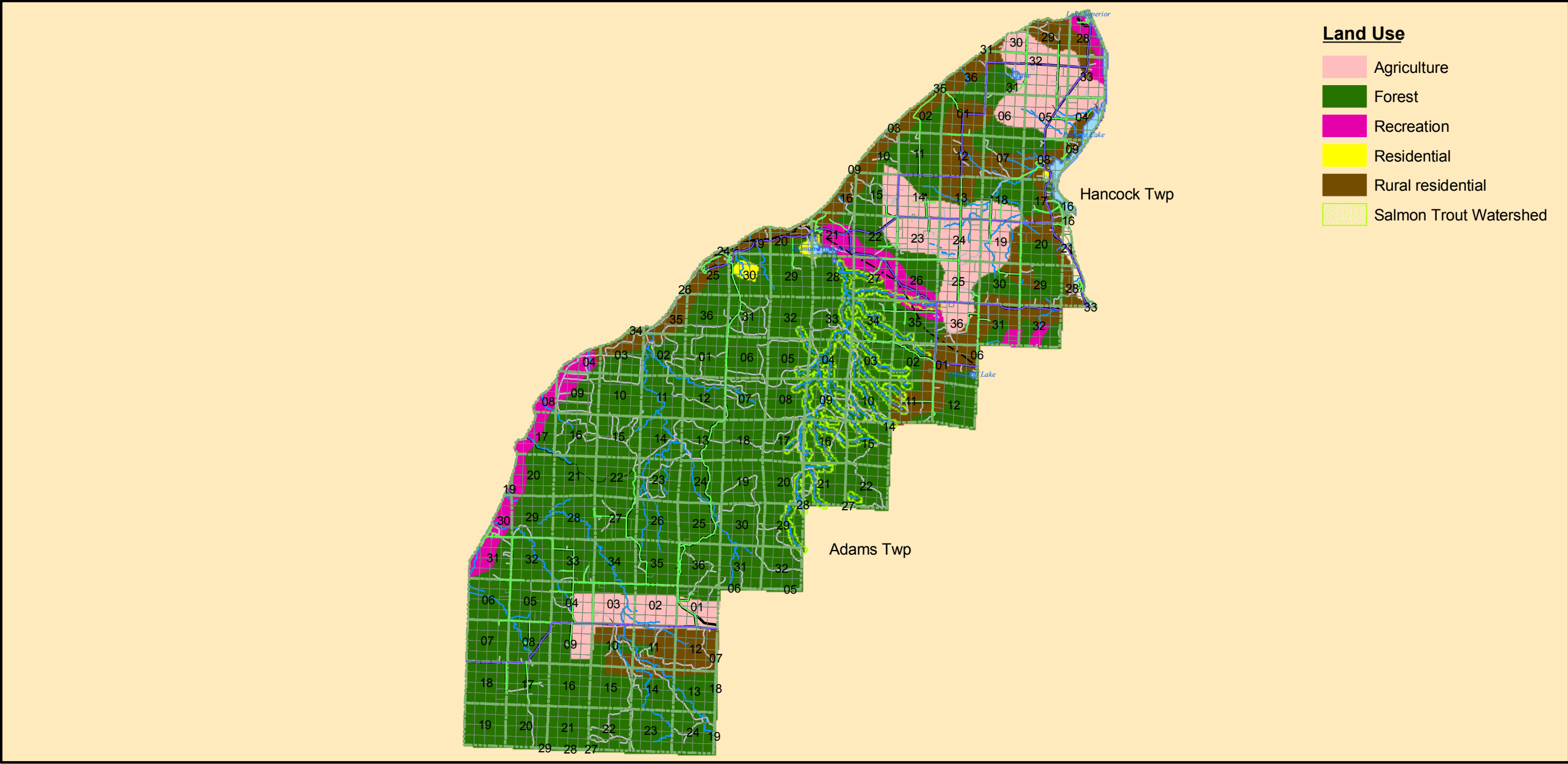


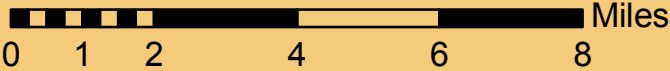
STANTON TOWNSHIP: Future Land Use



Land Use

- Agriculture
- Forest
- Recreation
- Residential
- Rural residential
- Salmon Trout Watershed

1:170,000



Data Obtained from GEM Center for Science and Environmental outreach.
 MTU Source:
 Map Produced by Russell Slatton for the Houghton County Planning Commission
 Revised by: MAB - UP Engineers & Architects, Inc.
 Revision Date: 06/26/2006 & 11/28/2011

Legend

- Sections
- County Primary Roads
- Q_Quarter Sections
- Highways
- Lakes
- All Other Roads
- Utilities
- Streams

